

# November 2024

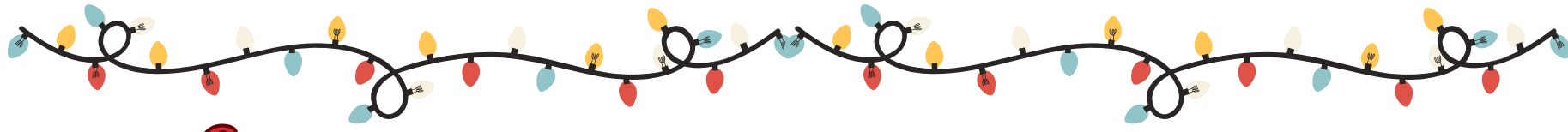
Shoreline Dance Academy Presents...Believe 2024!



**Sunday, December 8th Location: The Pollak Theater at Monmouth University.**

As always our Holiday show is designed to be a celebration of our children to kick off the Holiday Season and is not intended to be a full blown recital or performance. We have only been in session for a few months with little time to put full routines together, therefore this show is designed as more of a showcase for our families and friends.

This show has always been a favorite event at Shoreline and has become a tradition. All info can be found [here!](#)



## All Holiday Shows are Sunday, December 8th

3-5 year olds At 11:30am (arrival 11:15am)

5-7 year olds dancers At 1:30pm (arrival 1:15pm)

8-10 year olds & Adult Tap At 3:30pm (arrival 3:15pm)

11-13 year olds & select 14 & Up classes At 5:30pm (arrival 5:15pm)

14 & Up and Dance Celebration 7:30pm (arrival 7:15pm)



Pick up for shirts will start 12/2

ONLY AT

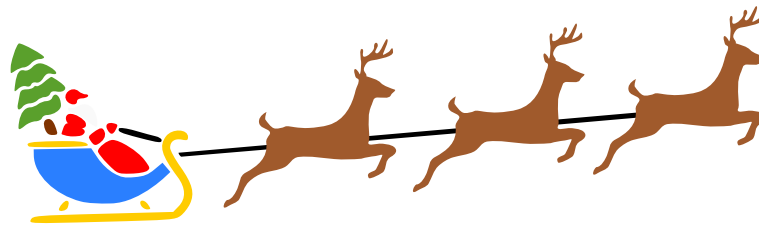


SCAN ME

## Dress Rehearsals!!

Dress Rehearsal will run during your class time the week of December 2nd-December 6th. Please arrive in your performance shirt and leggings with correct shoes at your regularly scheduled class time at Shoreline. Parents/Guardians! Please join us for the last 30 mins of your child's class to enjoy the show and tell and hear show information from Ms. Heather!

## Dancing Santas!



In the spirit of the Holiday Season, we have decided to offer Dancing Santas for FREE! We invite all parents/guardians to come and learn this one minute dance to surprise your dancer in the Holiday Show NO DANCE EXPERIENCE NECESSARY! When: Friday November 8th- December 6th (no class on November, 29th) Time: 5pm-5:50pm

FREE (includes 4 classes & a Santa hat)

Ms. Katie & Ms. Heather will be on stage dancing with you during the shows. Can't make all the rehearsals...no problem, come to the classes you can! In order to participate, you must attend at least one class! [Register online now or contact our office to register!](#)

## Christmas Caroling

The past two years our Company has brought Christmas Cheer to the neighborhood surrounding Shoreline. This year we are opening up the caroling to the whole school!!! Wednesday, December 18th from 6pm-7pm. Please arrive to Shoreline at 5:45pm for a prompt start time of 6pm. Classes at Shoreline from 6pm-7pm will NOT run and anyone missing class that night is entitled to a make up class. Classes at Shoreline will resume at 7pm. We will be escorted through the neighborhood surrounding Shoreline by the Neptune City Police Department. All dancers ages 3-7 MUST be accompanied by a parent/guardian, however we encourage families of all of our Shoreline students of any ages to attend as well! It is a great night for everyone. Please wear your most festive holiday attire! Light up hats, gloves, necklaces...holiday costumes are encouraged.



## Nursing Home Performance

We are so excited to announce we are returning to Ocean Grove Assisted Living & Memory Care (formerly Francis Asbury Manor)! Monday, December 16th starting promptly at 6pm - All dancers should arrive at 5:45pm for a prompt 6pm start time - Classes at Shoreline on December 16th will run from 4pm-4:50pm ONLY. Classes on Monday, December 16th from 5pm on WILL NOT RUN! (You are able to make up any missed class from that day at any time) Ocean Grove Assisted Living & Memory Care - 70 Stockton Ave. Ocean Grove. All classes that participated in the holiday show. All dancers should wear their green holiday show t-shirt, black leggings, and the proper footwear. Hair should be pulled back neatly. Parents should remain on site at the facility as your dancer can leave as soon as they are done performing. A line up of the show will be sent out closer to December 16th. We are are thrilled to go back to our nursing home performance! We have not been to the nursing home since Covid! So many special moments are made at this performance, so we would love for as many people as possible to attend! It is always a magical night!